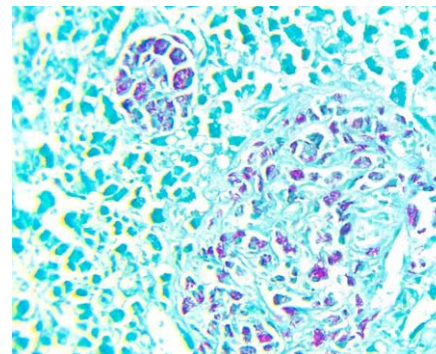


Acid Fast Bacteria Control Slides

Tissue:

- (+) Human tissue with acid fast bacterial infection
- (-) Human normal tissue



Ziehl-Neelsen Stain

Note: Tissue type may vary due to availability.

Fixative: 10% Neutral buffered formalin

Embedding: Paraffin

Thickness: 4 μ m

Mounting: Mounted on positively charged slides made of pure white glass; air dried

STORAGE: 2-8°C.

INTENDED USE: Deparaffinize and rehydrate before use.

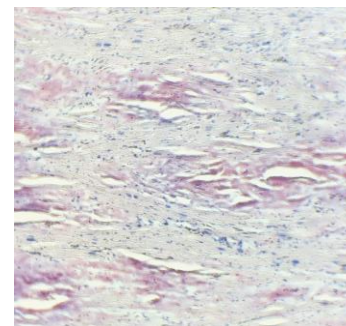
Positive tissue controls should only be utilized for monitoring the correct performance of processed tissues and test reagents, rather than as an aid in the interpretation of samples. If the positive tissue controls fail to demonstrate positive staining, results with the test specimens should be considered invalid.

Amyloid Control Slides

Tissue:

- (+) Human tissue with amyloid deposit
- (-) Human normal tissue

Note: Tissue type may vary due to availability.



Congo Red Stain (human heart tissue)

Fixative: 10% Neutral buffered formalin

Embedding: Paraffin

Thickness: 8-10 μ m

Mounting: Mounted on positively charged slides made of pure white glass; air dried

STORAGE: 2-8°C.

INTENDED USE: Deparaffinize and rehydrate before use.

Positive tissue controls should only be utilized for monitoring the correct performance of processed tissues and test reagents, rather than as an aid in the interpretation of samples. If the positive tissue controls fail to demonstrate positive staining, results with the test specimens should be considered invalid.

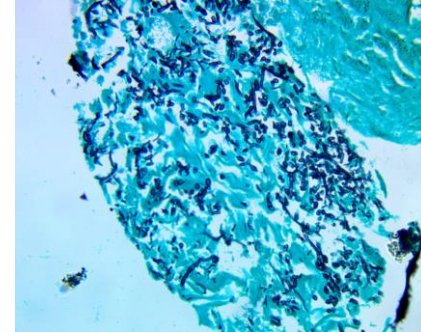
Candida Control Slides

Tissue:

(+) Human tissue with *Candida spp.* infection

(-) Human tissue

Note: Tissue type may vary due to availability.



Grocott's Methenamine Silver Stain

Fixative: 10% Neutral buffered formalin

Embedding: Paraffin

Thickness: 4 μ m

Mounting: Mounted on positively charged slides made of pure white glass; air dried

STORAGE: 2-8°C.

INTENDED USE: Deparaffinize and rehydrate before use.

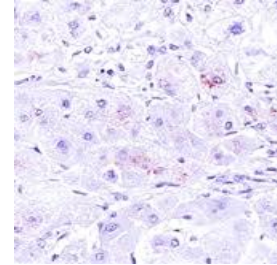
<i>Candida spp.</i>	Sharply outlined in black (Reference slides are included)
background	green

Positive tissue controls should only be utilized for monitoring the correct performance of processed tissues and test reagents, rather than as an aid in the interpretation of samples. If the positive tissue controls fail to demonstrate positive staining, results with the test specimens should be considered invalid.

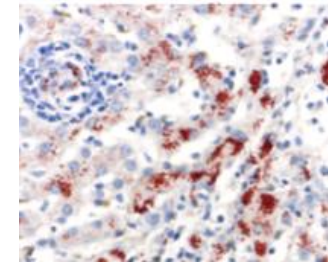
Copper Control Slides

Tissue:

- (+) Human liver tissue with copper deposit
- (-) Human normal liver tissue



(+)



(+++)

Rhodanine Stain

Copper

Red-brown cytoplasmic granules

Fixative: 10% Neutral buffered formalin

Embedding: Paraffin

Thickness: 4 μ m

Mounting: Mounted on positively charged slides made of pure white glass; air dried

STORAGE: 2-8°C.

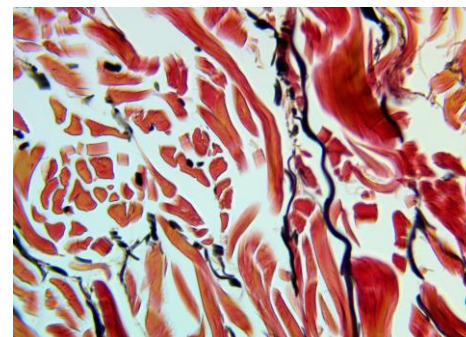
INTENDED USE: Deparaffinize and rehydrate before use.

Positive tissue controls should only be utilized for monitoring the correct performance of processed tissues and test reagents, rather than as an aid in the interpretation of samples. If the positive tissue controls fail to demonstrate positive staining, results with the test specimens should be considered invalid.

Elastic Staining Control Slides

Tissue:

(+) Human skin tissue



Elastin	Black staining (Reference slides are included)
---------	---

Fixative: 10% Neutral buffered formalin

Embedding: Paraffin

Thickness: 4 μ m

Mounting: Mounted on positively charged slides made of pure white glass; air dried

STORAGE: 2-8°C.

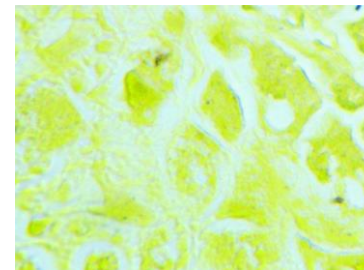
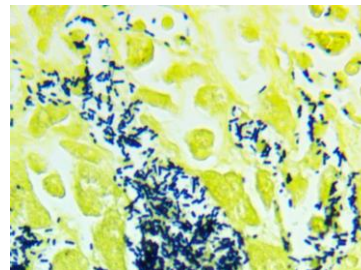
INTENDED USE: Deparaffinize and rehydrate before use.

Positive tissue controls should only be utilized for monitoring the correct performance of processed tissues and test reagents, rather than as an aid in the interpretation of samples. If the positive tissue controls fail to demonstrate positive staining, results with the test specimens should be considered invalid.

Gram Staining Control Slides

Tissue:

- (+) Human tissue with gram positive bacteria
- (-) Human liver tissue



Gram +	blue staining
Background	yellow staining

Fixative: 10% Neutral buffered formalin

Embedding: Paraffin

Thickness: 4 μ m

Mounting: Mounted on positively charged slides made of pure white glass; air dried

STORAGE: 2-8°C.

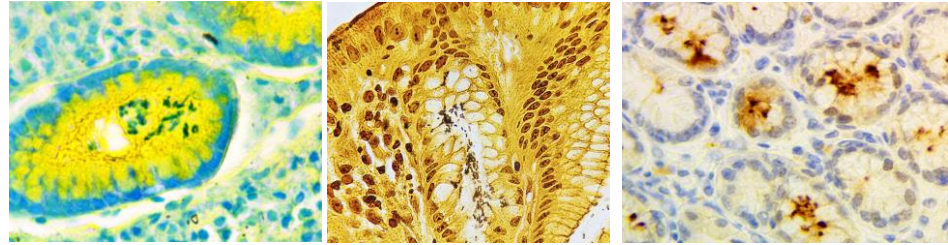
INTENDED USE: Deparaffinize and rehydrate before use.

Positive tissue controls should only be utilized for monitoring the correct performance of processed tissues and test reagents, rather than as an aid in the interpretation of samples. If the positive tissue controls fail to demonstrate positive staining, results with the test specimens should be considered invalid.

H.pylori Control Slides

Tissue:

(+) Human gastric tissue
with H.pylori



Field's Stain

Warthin - Starry stain

IHC

(two reference slides of Field's stain and/or Warthin-Starry stain are included)

Fixative: 10% Neutral buffered formalin

Embedding: Paraffin

Thickness: 4 μ m

Mounting: Mounted on positively charged slides made of pure white glass; air dried

STORAGE: 2-8°C.

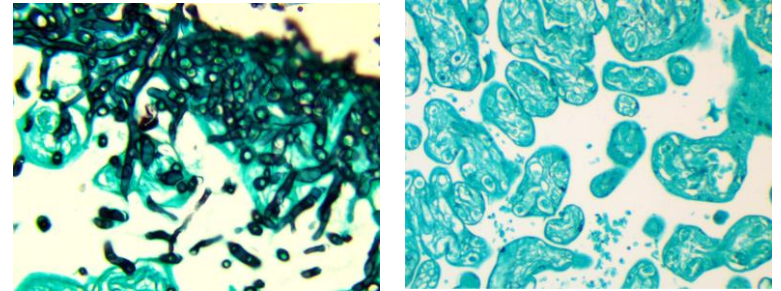
INTENDED USE: Deparaffinize and rehydrate before use.

Positive tissue controls should only be utilized for monitoring the correct performance of processed tissues and test reagents, rather than as an aid in the interpretation of samples. If the positive tissue controls fail to demonstrate positive staining, results with the test specimens should be considered invalid.

Histopath Fungus Control Slides

Tissue:

- (+) Human placenta tissue with Aspergillus
- (-) Human placenta tissue without histopath fungus



Fungus (Aspergillus): black
Background: green

Fixative: 10% Neutral buffered formalin

Embedding: Paraffin

Thickness: 4 μ m

Mounting: Mounted on positively charged slides made of pure white glass; air dried

STORAGE: 2-8°C.

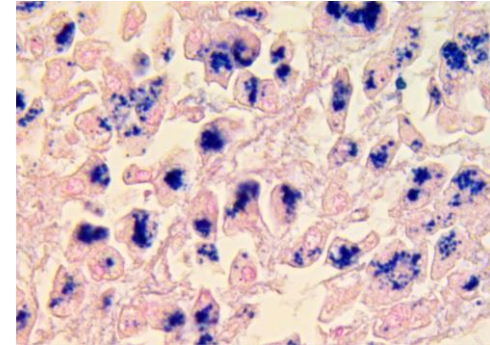
INTENDED USE: Deparaffinize and rehydrate before use.

Positive tissue controls should only be utilized for monitoring the correct performance of processed tissues and test reagents, rather than as an aid in the interpretation of samples. If the positive tissue controls fail to demonstrate positive staining, results with the test specimens should be considered invalid.

Iron Staining Control Slides

Tissue:

- (+) Human liver tissue with iron
- (-) Human liver tissue



Iron + blue staining
(Reference slides are included)

Fixative: 10% Neutral buffered formalin

Embedding: Paraffin

Thickness: 4 μ m

Mounting: Mounted on positively charged slides made of pure white glass; air dried

STORAGE: 2-8°C.

INTENDED USE: Deparaffinize and rehydrate before use.

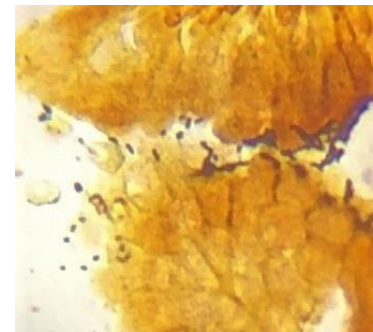
Positive tissue controls should only be utilized for monitoring the correct performance of processed tissues and test reagents, rather than as an aid in the interpretation of samples. If the positive tissue controls fail to demonstrate positive staining, results with the test specimens should be considered invalid.

Spirochete Control Slides

Tissue:

- (+) Human tissue with spirochete infection
- (-) Human tissue

Note: Tissue type may vary due to availability.



Steiner & Steiner Stain

Fixative: 10% Neutral buffered formalin

Embedding: Paraffin

Thickness: 4 μ m

Mounting: Mounted on positively charged slides made of pure white glass; air dried

STORAGE: 2-8°C.

INTENDED USE: Deparaffinize and rehydrate before use.

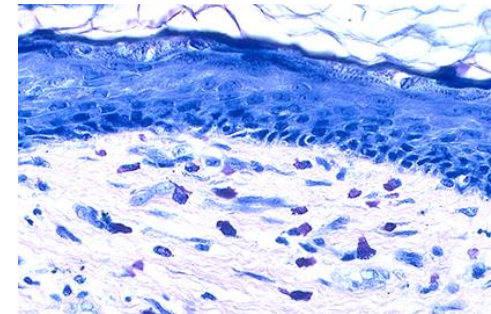
Positive tissue controls should only be utilized for monitoring the correct performance of processed tissues and test reagents, rather than as an aid in the interpretation of samples. If the positive tissue controls fail to demonstrate positive staining, results with the test specimens should be considered invalid.

spirochetes	Black
background	Yellow brown

Mast Cell Control Slides

Tissue:

Human skin tissue



Toluidine Blue

Fixative: 10% Neutral buffered formalin

Embedding: Paraffin

Thickness: 4 μ m

Mounting: Mounted on positively charged slides made of pure white glass; air dried

STORAGE: 2-8°C.

INTENDED USE: Deparaffinize and rehydrate before use.

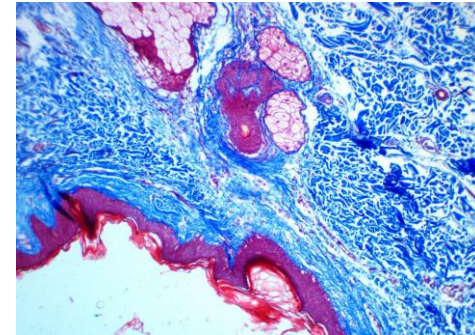
Mast cells	Dark purple/black
background	blue

Positive tissue controls should only be utilized for monitoring the correct performance of processed tissues and test reagents, rather than as an aid in the interpretation of samples. If the positive tissue controls fail to demonstrate positive staining, results with the test specimens should be considered invalid.

Trichrome Staining Control Slides

Tissue:

Human skin tissue



Collagen: Blue Muscle Fibers: Red Nuclei: Black/Blue

Fixative: 10% Neutral buffered formalin

Embedding: Paraffin

Thickness: 4 μ m

Mounting: Mounted on positively charged slides made of pure white glass; air dried

STORAGE: 2-8°C.

INTENDED USE: Deparaffinize and rehydrate before use.

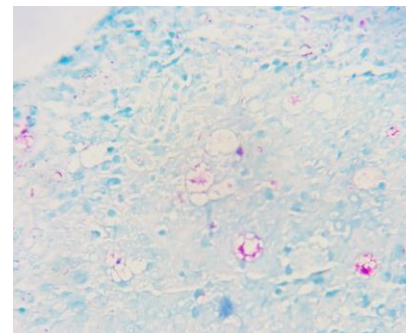
Positive tissue controls should only be utilized for monitoring the correct performance of processed tissues and test reagents, rather than as an aid in the interpretation of samples. If the positive tissue controls fail to demonstrate positive staining, results with the test specimens should be considered invalid.

Mycobacterium leprae Control Slides

Tissue:

- (+) Human tissue with *M. leprae* infection
- (-) Human tissue

Note: Tissue type may vary due to availability.



Fite Stain

Fixative: 10% Neutral buffered formalin

Embedding: Paraffin

Thickness: 4 μ m

Mounting: Mounted on positively charged slides made of pure white glass; air dried

STORAGE: 2-8°C.

INTENDED USE: Deparaffinize and rehydrate before use.

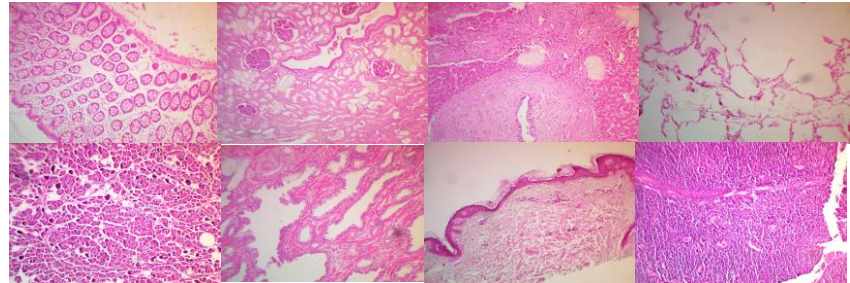
M. leprae	purple red staining
background	Light blue

Positive tissue controls should only be utilized for monitoring the correct performance of processed tissues and test reagents, rather than as an aid in the interpretation of samples. If the positive tissue controls fail to demonstrate positive staining, results with the test specimens should be considered invalid.

Microarray Control Slides (2mm cores)

Tissue:

human colon, kidney, liver, lung,
pancreas, prostate, skin, tonsil



H&E staining

Fixative: 10% Neutral buffered formalin

Embedding: Paraffin

Thickness: 4 μ m

Mounting: Mounted on positively charged slides made of
pure white glass; air dried

STORAGE: 2-8°C.

INTENDED USE: Deparaffinize and rehydrate before use.

Positive tissue controls should only be utilized for monitoring the correct performance of processed tissues and test reagents, rather than as an aid in the interpretation of samples. If the positive tissue controls fail to demonstrate positive staining, results with the test specimens should be considered invalid.